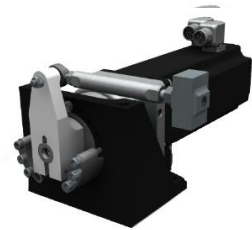


eForce control loading systems -VL

E2M's value line represents an affordable, robust and scalable force feedback solution, which can be used for flight and driving trainers. Possible applications are Procedure Trainers, Flight Training Devices (FTD), Mission Trainers and Driving Simulators.

- Competitive price
- Same full featured model software available as for the rest of the E2M CLS lines.
- Same advanced control software included as for the rest of the E2M CLS lines.
- Compact dimensions
- Single phase powered

eF-GD-80-VL Compact and scalable geared-drive for primary- and secondary controls for FTD	torque-continuous⁽¹⁾	80 Nm	700 lb in
	torque-peak⁽²⁾	125 Nm	1100 lb in
	stroke	+/-0.78 rad	+/- 45 deg
	maximum velocity	1.7 rad/s	100 deg/s
	weight⁽³⁾	11,2 kg	24,7 lb
	dimensions (lwxh)⁽³⁾	376x150x130 mm	14.8x4.2x5.9 in

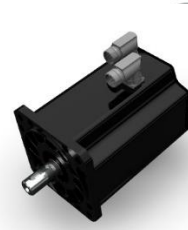


(1) this is the 20% duty cycle, max 5 min

(2) this is the max 1s peak value

(3) including motor, including axis, including brackets, excluding loadcell, excluding connectors.

eF-DDM-10i-VL Compact direct drive with multiturn functionality for steering wheel applications	torque-continuous⁽¹⁾	10 Nm	88 lb in
	torque-peak⁽²⁾	16 Nm	140 lb in
	stroke	multiturn rad	multiturn deg
	maximum velocity	14 rad/s	800 deg/s
	weight⁽⁴⁾	7 kg	15.4 lb
	dimensions (lwxh)⁽⁴⁾	278x100x100 mm	11x4x4 in



(1) this is the 20% duty cycle, max 5 min

(2) this is the max 1s peak value

(4) just the motor itself, from outgoing axis to backside of the motor.