

Drop-in eForce control loading systems

E2M's drop-in line incorporates robust, smooth, compact and cost-efficient force feedback solutions for high fidelity training and R&D purposes

Widespread, Flexible Use

Typical applications are Full Mission, Fighter and Engineering Simulators, Part Task and Procedure Trainers, as well as R&D environments

Easy Installation

The eForce drop-in units use two direct- and/or geared drive actuators (pitch and roll) with load cells in a single, contained package

- Unit can be "dropped" in to application as one piece - no actuator linkages required for installation
- Stock hardware interface is a simple, robust clamping mechanism - custom interfaces also available
- Single-phase power supply



Advanced eMoveRT Software

Same market-leading software package as the rest of the eForce control loading line

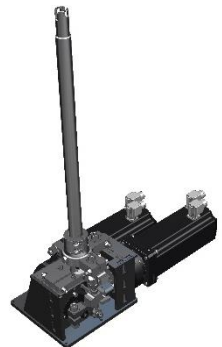
- Completely customizable software models
- Electrical linking between flight controls
- Additional I/O for customized user controls

eF2-CS-60

Center Stick (CS)

- Proven eForce technology
- Smooth force feedback
- Most compact in width and height
- Cost-efficient

	Rotational @pivot point	Translational @ GRP ⁽²⁾ (650 mm above pivot point)
torque - continuous	60 Nm	92 N
torque - peak	90 Nm	138 N
stroke	+/-18 deg	+/-0.2 m
maximum velocity	120 deg/s	1.3 m/s
	2.1 rad/s	
weight⁽¹⁾	32 kg	
dimensions (LxWxH)⁽³⁾	529x250x166 mm	

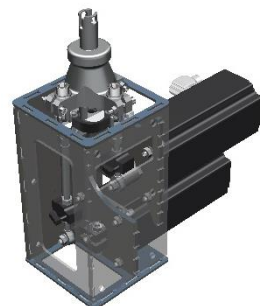


eF2-SS-20

Side Stick (SS)

- Proven eForce technology
- Smooth force feedback
- Compact
- Cost-efficient

	Rotational @pivot point	Translational @ GRP ⁽²⁾ (200 mm above pivot point)
torque - continuous	20 Nm	100 N
torque - peak	35 Nm	175 N
stroke	+/-18 deg	+/-0.062 m
maximum velocity	340 deg/s	1.2 m/s
	6.0 rad/s	
weight⁽¹⁾	25 kg	
dimensions (LxWxH)⁽³⁾	395x220x290 mm	



(1) as depicted in the picture, including stick and grip

(2) GRP: Grip Reference Point

(3) height from lower to upper plate, excluding stick and grip

High torque Center Stick (CS)

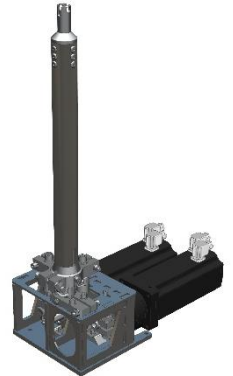
Typical applications are Fighter Simulators and R&D environments.

eF2-CS-140

Center Stick (CS)

- Proven eForce technology
- Smooth force feedback
- Most compact in width and height
- Cost-efficient

	Rotational @pivot point	Translational @ GRP ⁽²⁾ (650 mm above pivot point)
torque - continuous	140 Nm	215 N
torque - peak	200 Nm	308 N
stroke	+/-19 deg	+/-0.18 m
maximum velocity	180 deg/s	2.0 m/s
weight⁽¹⁾	35 kg	
dimensions (LxWxH)⁽³⁾	529x250x166 mm	



(1) as depicted in the picture, including stick and grip

(2) GRP: Grip Reference Point

(3) height from lower to upper plate, excluding stick and grip