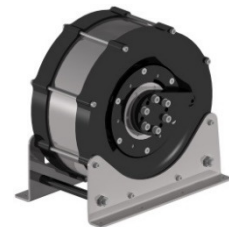


eForce control loading systems

E2M control loading actuators accurately reproduce control forces in various applications from mission trainers up to full flight level D simulators. The active force feedback solutions are for fixed- and rotary wing flight simulators, both civil and military.

- smooth in operation
- reliable and robust
- high dynamics and performance
- cost – effective and competitive in pricing

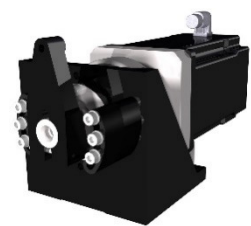
eF-DD-F-200 High performance high torque direct-drive actuator for level D primary controls	torque - continuous	200 Nm	1770 lb in
	torque - peak	400 Nm	3540 lb in
	stroke	+/- 0.78 rad	+/- 45 deg
	maximum velocity	12.6 rad/s	720 deg/s
	weight⁽⁵⁾	47 kg	103.6 lb
	dimensions (lxwxh)⁽⁵⁾	167x315x325 mm	6.6x12.4x12.8 in



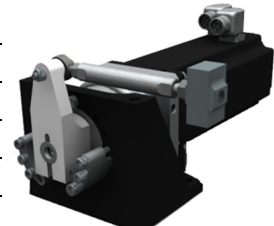
eF-GD-F-160 High performance geared-drive actuator for level D primary controls	torque - continuous	160 Nm	1410 lb in
	torque - peak	240 Nm	2120 lb in
	stroke	+/- 0.78 rad	+/- 45 deg
	maximum velocity	12,6 rad/s	720 deg/s
	weight⁽⁵⁾	16 kg	35.3 lb
	dimensions (lxwxh)⁽⁵⁾	290x345x392 mm	11.4x13.6x15.4 in
l w/o motor	104 mm	4.1 in	



eF-GD-220 Compact and dynamic geared-drive for primary- and secondary controls	torque - continuous	220 Nm	2120 lb in
	torque - peak	400 Nm	3540 lb in
	stroke	+/- 0.78 rad	+/- 45 deg
	maximum velocity	10,5 rad/s	600 deg/s
	weight⁽⁵⁾	20,5 kg	45.2 lb
	dimensions (lxwxh)⁽⁵⁾	412x180x176 mm	16.2x7.1x6.9 in



eF-GD-120 Compact and dynamic geared-drive for primary- and secondary controls	torque - continuous	120 Nm	1060 lb in
	torque - peak	180 Nm	1590 lb in
	stroke	+/- 0.78 rad	+/- 45 deg
	maximum velocity	17,5 rad/s	1000 deg/s
	weight⁽⁵⁾	11,2 kg	24,7 lb
	dimensions (lxwxh)⁽⁵⁾	376x150x130 mm	14.8x4.2x5.9 in



eF-DD-130

Smooth and cost-effective, direct-drive for primary controls

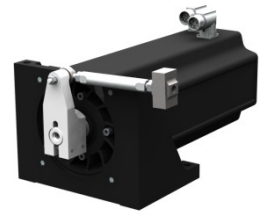
torque - continuous	130 Nm	1150 lb in
torque - peak	180 Nm	1590 lb in
stroke	+/-0,78 rad	+/- 45 deg
maximum velocity	15 rad/s	860 deg/s
weight⁽⁵⁾	48,2 kg	106 lb
dimensions (lxwxh)⁽⁵⁾	409x236x212 mm	16.1x9.3x8.3 in



eF-DD-50

cost-effective direct-drive actuator for secondary controls

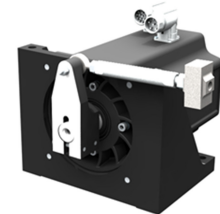
torque - continuous	50 Nm	440 lb in
torque - peak	90 Nm	790 lb in
stroke	+/-0,78 rad	+/- 45 deg
maximum velocity	30 rad/s	1700 deg/s
weight⁽⁵⁾	22 kg	48.5 lb
dimensions (lxwxh)⁽⁵⁾	409x205x160 mm	16.1x8.1x6.3 in



eF-DD-20

cost-effective direct-drive actuator for secondary controls

torque - continuous	20 Nm	175 lb in
torque - peak	30 Nm	260 lb in
Stroke	+/-0,75 rad	+/-0,45 deg
maximum velocity	80 rad/s	4500 deg/s
weight⁽⁵⁾	11,5 kg	25.4 lb
dimensions (lxwxh)⁽⁵⁾	295x205x160 mm	10.2x8.1x6.3 in



eF-DDM-50 i

cost-effective direct-drive actuator with multi-turn functionality

torque - continuous	50 Nm	440 lb in
torque - peak	90 Nm	790 lb in
Stroke	multiturn	multiturn
maximum velocity	30 rad/s	1700 deg/s
weight⁽⁵⁾	21,5 kg	47,4 lb
dimensions (lxwxh)⁽⁵⁾	409x205x160 mm	16.1x8.1x6.3 in



eF-DDM-20

cost-effective direct-drive actuator with multi-turn functionality

torque - continuous	20 Nm	175 lb in
torque - peak	30 Nm	260 lb in
stroke	multiturn	multiturn
maximum velocity	80 rad/s	4500 deg/s
weight⁽⁵⁾	12 kg	26.5 lb
dimensions (lxwxh)⁽⁵⁾	457x145x145 mm	18x5.7x5.7 in



eF-DDM-20 i

dimensions (lxwxh)⁽⁵⁾	267x145x145 mm	11x5.7x5.7 in
-----------------------------------------	----------------	---------------

⁽⁵⁾ including motor, including axis, including brackets, excluding loadcell, excluding connectors.