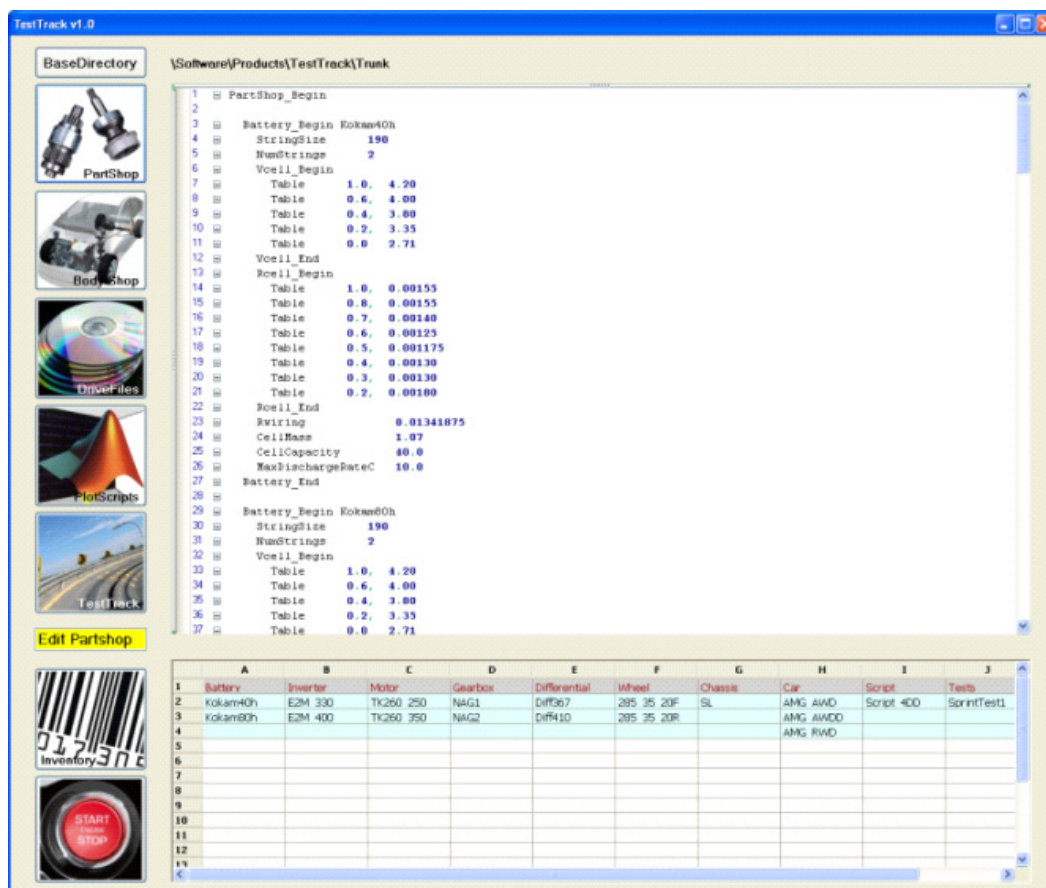


E2M Technologies can help you in the design phase of your electric vehicle. The most prominent area of development is the drive systems for trucks and busses. E2M Technologies offers turnkey electric drive systems up to 500 kW peak

power. The drive systems are complete from throttle input to power on the road. Areas of expertise include mechanical design, electronics design, software design, control engineering and system design.

Vehicle simulation



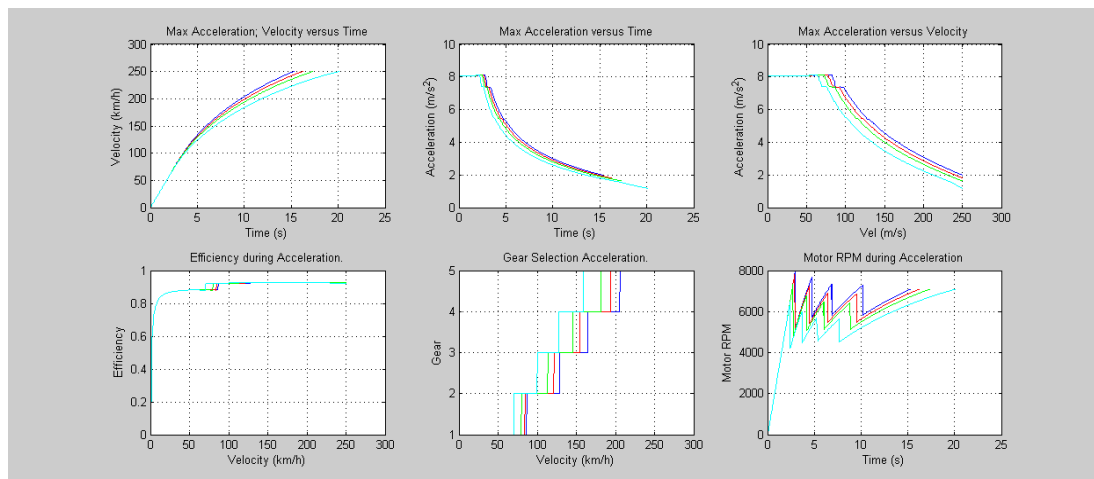
E2M Technologies can perform extensive simulation of the complete vehicle, including:

- vehicle
- inverter (controller, power electronics, thermal)
- motor (electromagnetic, thermal)
- battery systems (electric, thermal)
- vehicle controller

eDrive Services

Performance simulation

Using a dedicated simulation application the EV performance can be calculated very fast, making comparisons of different drive line solution alternatives very easy.



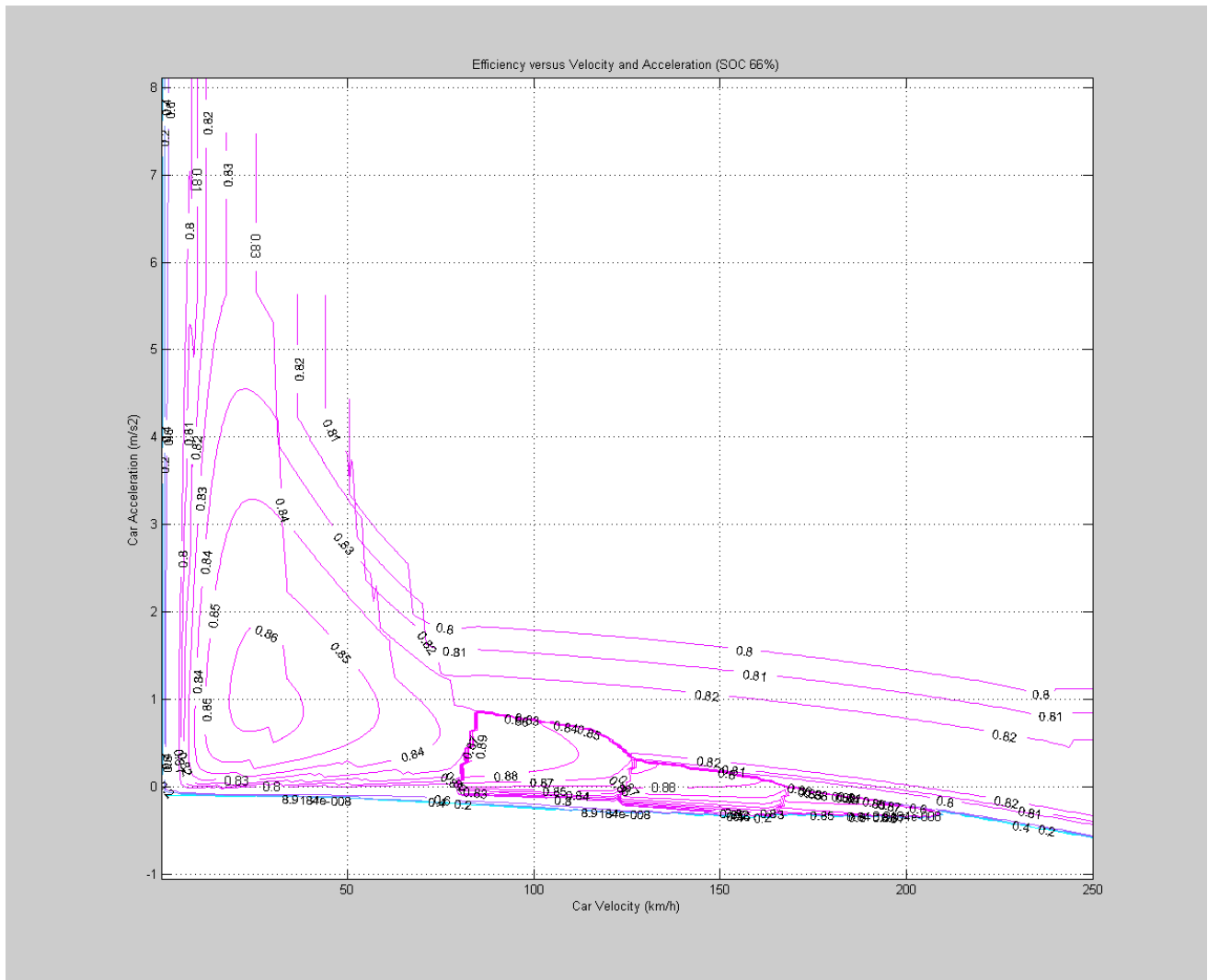
E2M Technologies B.V.

Fokkerweg 300 - Building 67, second floor - 1438 AN Oude Meer - The Netherlands
Tel. +31 (0)20 7070901 - Fax +31 (0)20 7070907
www.e2mdrivesystems.eu - info@e2mtechnologies.eu

eDrive Services

Efficiency analysis

The complete drive line efficiency including losses in battery systems, the inverter and motor, gearbox or other mechanics if applicable is analyzed using simulation.



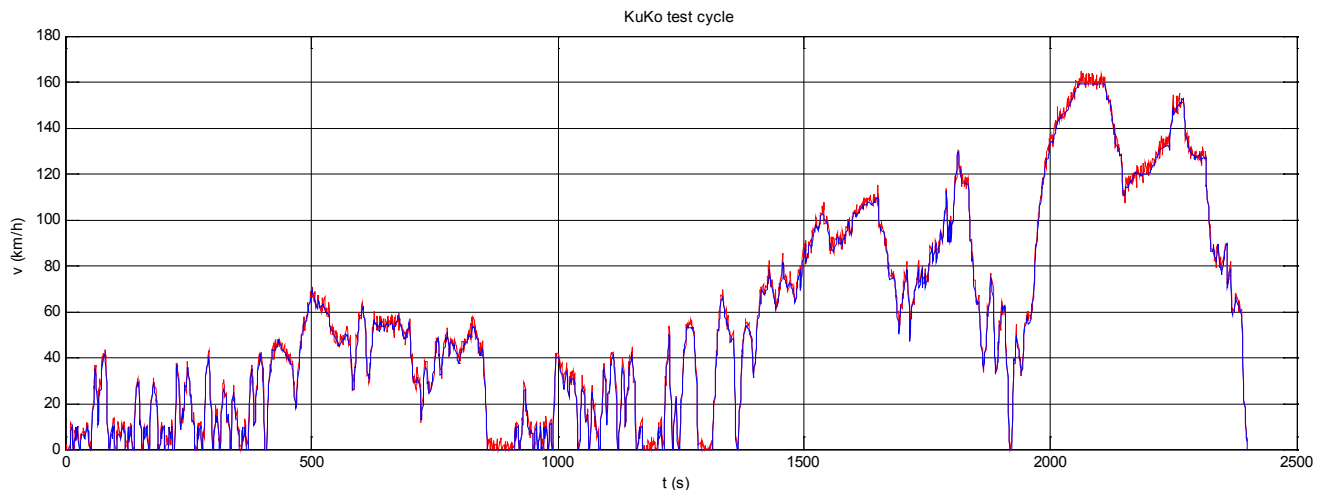
E2M Technologies B.V.

Fokkerweg 300 - Building 67, second floor - 1438 AN Oude Meer - The Netherlands
Tel. +31 (0)20 7070901 - Fax +31 (0)20 7070907
www.e2mdrivesystems.eu - info@e2mtechnologies.eu

eDrive Services

Range simulation

Range simulations for customer specific cycles or industry standard cycles can be performed.



EV drive line configuration comparisons

E2M technologies performs complete studies comparing different drive line configurations (electric, hybrid, gearbox, direct drive, one or more motors, etc.) to find the right solution for the application. For specific applications like for example a garbage truck, the driving behavior can be analyzed using in-field measurements of distance, vehicle velocity and acceleration, fuel consumption etc.

E2M Technologies B.V.

Fokkerweg 300 - Building 67, second floor - 1438 AN Oude Meer - The Netherlands
Tel. +31 (0)20 7070901 - Fax +31 (0)20 7070907
www.e2mdrivesystems.eu - info@e2mtechnologies.eu